

# 3265 Meridian Parkway

Meridian Business Campus at Weston (I-75 & Sawgrass Expressway)

3265 Meridian Parkway, located near the main entrance of Meridian Business Campus, offers image-conscious businesses a creatively designed, multi-use facility. 3265 has the exterior appearance of a prestigious single-story office complex, but provides a creative alternative for businesses needing both office and service space.

The building's design offers a full range of flexibility in space planning to accommodate complete office or a mix of office, service, showroom, and warehouse. Individual loading facilities and ample parking are additional features of 3265 Meridian Parkway.

- Generous window-lines create exceptional office space
- Site landscaping creates an impressive corporate image
- Comprehensive tenant sign program provides strong corporate identity
- Offices to suit
- 14'-0" clear height
- Drive-in door service
- Individually metered and controlled air conditioning
- Ample parking



For further information, contact:

**Timothy J. Talbot**  
**ComReal Ft. Lauderdale**

**ComReal**

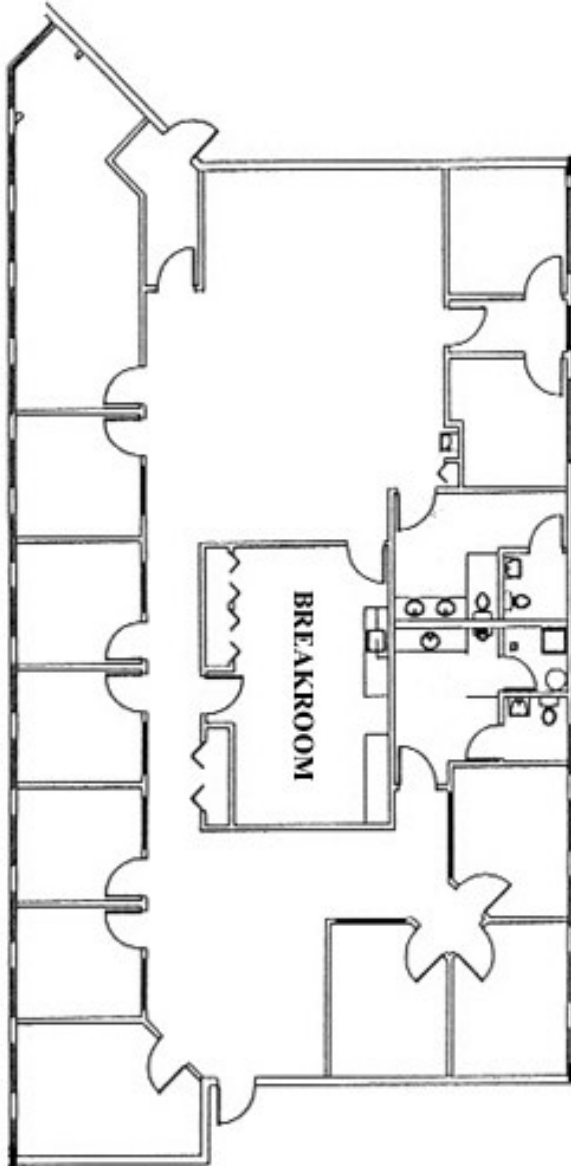
FT. LAUDERDALE

954/385-0000  
3050 Universal Boulevard,  
Suite 100  
Weston, Florida 33331

**MERIDIAN**  
BUSINESS CAMPUS AT WESTON

# Meridian Business Campus

3265 Meridian Parkway, Weston, FL 33331



**Suite 130 - 3,680 SF**  
**(As Built)**

FOR LEASING INFORMATION:

Timothy J. Talbot | [ttalbot@comreal.com](mailto:ttalbot@comreal.com)

**954.385.0000**

